
TRIM28 Polyclonal Antibody

(Catalog #A51701)

Background

Forms a complex with a KRAB-domain transcription factor and increases the efficiency of KRAB-mediated repression. Silences transcription through an interaction with HP1 proteins. Acts as a corepressor of transcription for the KRAB zinc finger proteins and as a moderator of the repression activity. May play a role as a coactivator for CEBPB and NR3C1 in the transcriptional activation of the Alpha-1-acid glycoprotein gene.

Description

TRIM28 Polyclonal Antibody. Unconjugated. Raised in: Rabbit.

Formulation

Liquid. 0.03% Proclin 300, 50% Glycerol, 0.01M PBS, PH 7.4.

Specificity

Human

Isotype

IgG

Uniprot ID

Q13263

Purification

>95%, Protein G purified

Immunogen

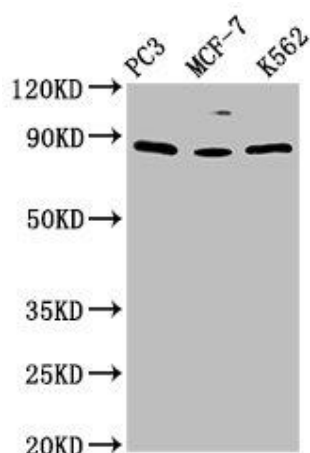
Recombinant Human Transcription intermediary factor 1-beta protein (22-291AA)

Storage

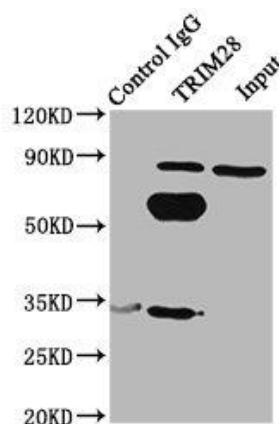
Shipped at 4°C. Upon delivery aliquot and store at -20°C (short-term) or -80°C (long-term). Avoid repeated freeze.

Application

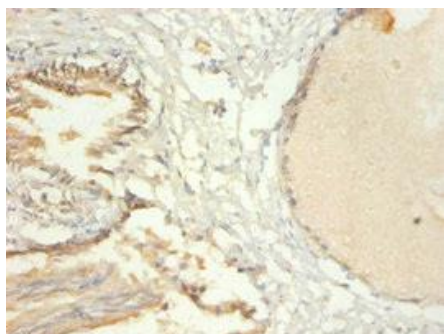
ELISA, WB, IHC, IP; Recommended dilution: WB 1:500 - 1:5000, IHC 1:20 - 1:200, IP 1:200 - 1:2000



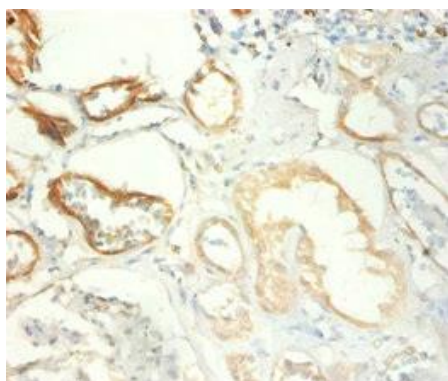
Western Blot
 Positive WB detected in: PC-3 whole cell lysate, MCF-7 whole cell lysate, K562 whole cell lysate
 All lanes: TRIM28 antibody at 1.5µg/ml
 Secondary
 Goat polyclonal to rabbit IgG at 1/50000 dilution
 Predicted band size: 89, 80 kDa
 Observed band size: 89 kDa



Immunoprecipitating TRIM28 in HeLa whole cell lysate
 Lane 1: Rabbit control IgG(1µg) instead of TRIM28 Antibody in HeLa whole cell lysate. For western blotting, a HRP-conjugated Protein G antibody was used as the secondary antibody (1/2000)
 Lane 2: TRIM28 Antibody(6µg)+ HeLa whole cell lysate(500µg)
 Lane 3: HeLa whole cell lysate (10µg)



Immunohistochemistry of paraffin-embedded human prostate tissue using TRIM28 Antibody at dilution of 1:100



Immunohistochemistry of paraffin-embedded human kidney tissue using TRIM28 Antibody at dilution of 1:100