

## SLC35C1 Polyclonal Antibody

(Catalog # A60982)

### Background

Involved in GDP-fucose import from the cytoplasm into the Golgi lumen.

### Description

SLC35C1 Polyclonal Antibody. Unconjugated. Raised in: Rabbit.

### Formulation

Liquid. 0.03% Proclin 300, 50% Glycerol, 0.01M PBS, PH 7.4.

### Specificity

Human

### Isotype

IgG

### Uniprot ID

Q96A29

### Purification

>95%, Protein G purified

### Immunogen

Recombinant Human GDP-fucose transporter 1 protein (287-364AA)

### Storage

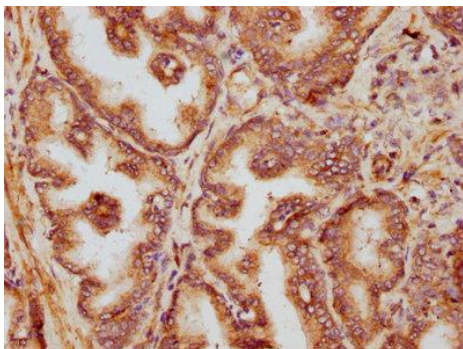
Shipped at 4°C. Upon delivery aliquot and store at -20°C (short-term) or -80°C (long-term). Avoid repeated freeze.

### Alternative Names

GDP-fucose transporter 1, SLC35C1, FUCT1, Solute carrier family 35 member C1

### Application

ELISA, IHC; Recommended dilution: IHC:1:200-1:500



IHC image of SLC35C1 Polyclonal Antibody diluted at 1:400 and staining in paraffin-embedded human prostate tissue performed on a Leica Bond™ system. After dewaxing and hydration, antigen retrieval was mediated by high pressure in a citrate buffer (pH 6.0). Section was blocked with 10% normal goat serum 30min at RT. Then primary antibody (1% BSA) was incubated at 4°C overnight. The primary is detected by a biotinylated secondary antibody and visualized using an HRP conjugated SP system.