

SLC38A7 Polyclonal Antibody

(Catalog # A61002)

Background

Mediates sodium-dependent transport of amino acids, preferentially L-glutamine.

Description

SLC38A7 Polyclonal Antibody. Unconjugated. Raised in: Rabbit.

Formulation

Liquid. 0.03% Proclin 300, 50% Glycerol, 0.01M PBS, PH 7.4.

Specificity

Human

Isotype

IgG

Uniprot ID

Q9NVC3

Purification

>95%, Protein G purified

Immunogen

Recombinant Human Putative sodium-coupled neutral amino acid transporter 7 protein (1-55AA)

Storage

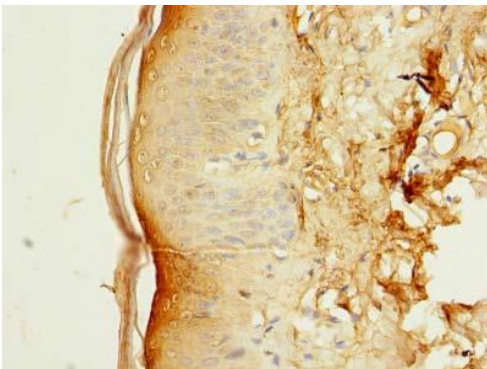
Shipped at 4°C. Upon delivery aliquot and store at -20°C (short-term) or -80°C (long-term). Avoid repeated freeze.

Alternative Names

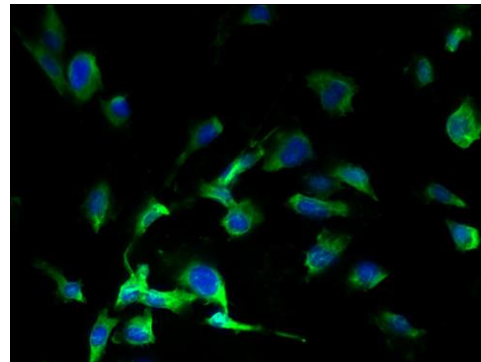
Putative sodium-coupled neutral amino acid transporter 7, SLC38A7, SNAT7, Solute carrier family 38 member 7

Application

ELISA, IHC, IF; Recommended dilution: IHC:1:20-1:200, IF:1:50-1:200



Immunohistochemistry of paraffin-embedded human skin tissue using SLC38A7 Polyclonal Antibody at dilution of 1:100



Immunofluorescent analysis of U251 cells using SLC38A7 Polyclonal Antibody at a dilution of 1:100 and Alexa Fluor 488-conjugated AffiniPure Goat Anti-Rabbit IgG(H+L)