
RBM10 Polyclonal Antibody

(Catalog # A63294)

Background

May be involved in post-transcriptional processing, most probably in mRNA splicing. Binds to RNA homopolymers, with a preference for poly(G) and poly(U) and little for poly(A).

Description

RBM10 Polyclonal Antibody. Unconjugated. Raised in: Rabbit.

Formulation

Liquid. 0.03% Proclin 300, 50% Glycerol, 0.01M PBS, PH 7.4.

Specificity

Human, Mouse

Isotype

IgG

Uniprot ID

P98175

Purification

>95%, Protein G purified

Immunogen

Recombinant Human RNA-binding protein 10 protein (501-700AA)

Storage

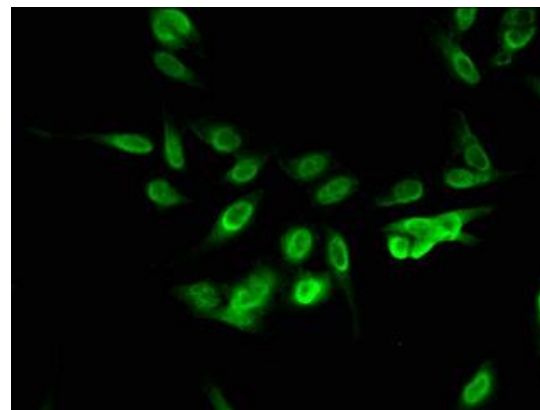
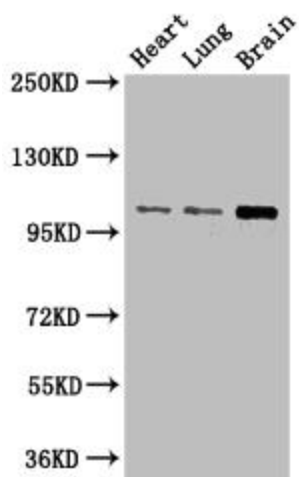
Shipped at 4°C. Upon delivery aliquot and store at -20°C (short-term) or -80°C (long-term). Avoid repeated freeze.

Alternative Names

RNA-binding protein 10, G patch domain-containing protein 9, RNA-binding motif protein 10, RNA-binding protein S1-1, S1-1, RBM10, DXS8237E, GPATC9, GPATCH9, KIAA0122

Application

ELISA, WB, IHC, IF; Recommended dilution: WB:1:2000-1:10000, IHC:1:20-1:200, IF:1:50-1:200



Immunofluorescent analysis of HeLa cells at a dilution of 1:100 and Alexa Fluor 488-conjugated AffiniPure Goat Anti-Rabbit IgG(H+L)

Western Blot

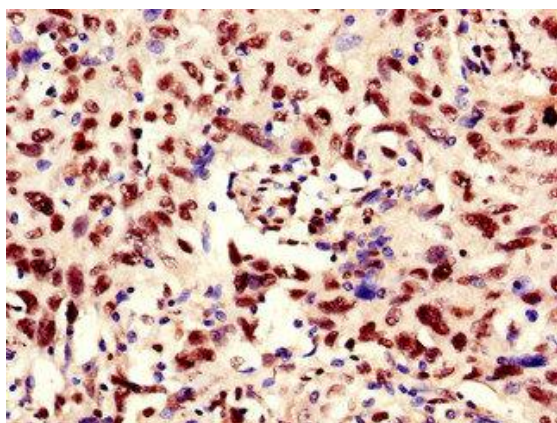
Positive WB detected in: Mouse heart tissue, Mouse lung tissue, Mouse brain tissue

All lanes: RBM10 Polyclonal Antibody at 3ug/ml
Secondary

Goat polyclonal to rabbit IgG at 1/50000 dilution

Predicted band size: 104, 95 kDa

Observed band size: 104 kDa



Immunohistochemistry of paraffin-embedded human lung cancer at dilution of 1:100