

SMNDC1 Polyclonal Antibody

(Catalog # A63466)

Background

Necessary for spliceosome assembly. Overexpression causes apoptosis.

Description

SMNDC1 Polyclonal Antibody. Unconjugated. Raised in: Rabbit.

Formulation

0.03% Proclin 300, 50% Glycerol, 0.01M PBS, PH 7.4

Specificity

Human

Isotype

IgG

Uniprot ID

O75940

Purification

Protein G purified

Immunogen

Recombinant Human Survival of motor neuron-related-splicing factor 30 protein (1-238AA)

Storage

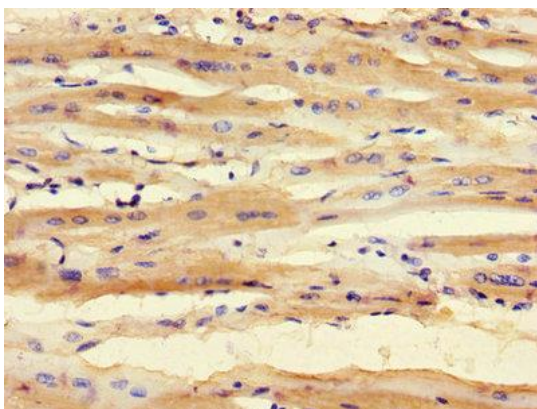
Shipped at 4°C. Upon delivery aliquot and store at -20°C (short-term) or -80°C (long-term). Avoid repeated freeze.

Alternative Names

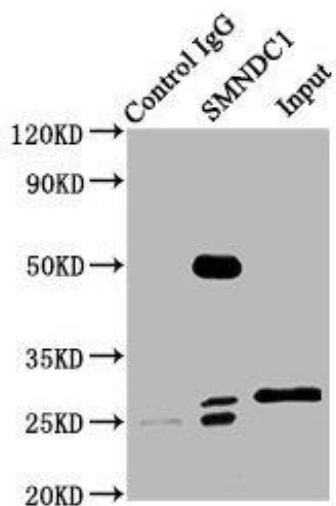
Survival of motor neuron-related-splicing factor 30, 30 kDa splicing factor SMNrp, SMN-related protein, Survival motor neuron domain-containing protein 1, SMNDC1, SMNR, SPF30

Application

ELISA, IHC, IP; Recommended dilution: IHC:1:20-1:200, IP:1:200-1:2000



IHC of paraffin-embedded human heart tissue using SMNDC1 Antibody at dilution of 1:100



Immunoprecipitating SMNDC1 in HeLa whole cell lysate

Lane 1: Rabbit control IgG (1ug) instead of SMNDC1 Antibody in HeLa whole cell lysate. For western blotting, a HRP-conjugated Protein G antibody was used as the secondary antibody (1/2000)

Lane 2: SMNDC1 Antibody (6ug) + HeLa whole cell lysate (500ug)

Lane 3: HeLa whole cell lysate (10ug)