
FGD6 Polyclonal Antibody

(Catalog #A65666)

Background

May activate CDC42, a member of the Ras-like family of Rho- and Rac proteins, by exchanging bound GDP for free GTP. May play a role in regulating the actin cytoskeleton and cell shape.

Description

FGD6 Polyclonal Antibody. Unconjugated. Raised in: Rabbit.

Formulation

0.03% Proclin 300, 50% Glycerol, 0.01M PBS, PH 7.4.

Specificity

Human

Isotype

IgG

Uniprot ID

Q6ZV73

Purification

Protein G purified

Immunogen

Recombinant Human FYVE, RhoGEF and PH domain-containing protein 6 protein (1138-1352AA)

Storage

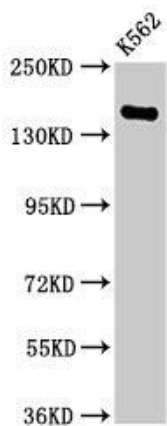
Shipped at 4°C. Upon delivery aliquot and store at -20°C (short-term) or -80°C (long-term). Avoid repeated freeze.

Alternative Names

FYVE, RhoGEF and PH domain-containing protein 6, Zinc finger FYVE domain-containing protein 24, FGD6, KIAA1362, ZFYVE24

Application

ELISA, WB, IHC; Recommended dilution: WB 1:500 - 1:5000, IHC 1:20 - 1:200



Western Blot

Positive WB detected in: K562 whole cell lysate

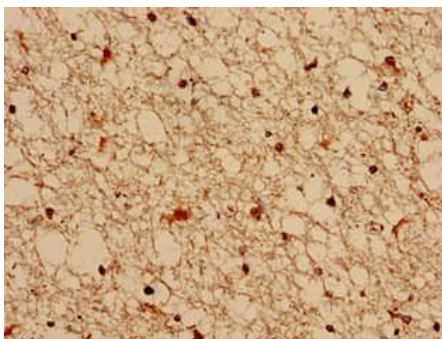
All lanes: FGD6 Polyclonal Antibody at 2.8ug/ml

Secondary

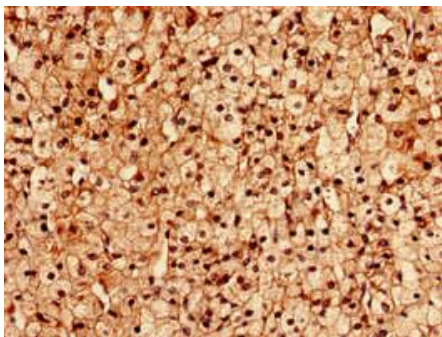
Goat polyclonal to rabbit IgG at 1/50000 dilution

Predicted band size: 161, 156 KDa

Observed band size: 161 KDa



Immunocytochemistry analysis of human brain tissue using FGD6 Polyclonal Antibody at dilution of 1:100.



Immunocytochemistry analysis of human adrenal gland tissue using FGD6 Polyclonal Antibody at dilution of 1:100.