

LPGAT1 Polyclonal Antibody

(Catalog # A66270)

Background

Lysophosphatidylglycerol (LPG) specific acyltransferase that recognizes various acyl-CoAs and LPGs as substrates but demonstrates a clear preference for long chain saturated fatty acyl-CoAs and oleoyl-CoA as acyl donors. Prefers oleoyl-LPG over palmitoyl-LPG as an acyl receptor and oleoyl-CoA over lauroyl-CoA as an acyl donor.

Description

LPGAT1 Polyclonal Antibody. Unconjugated. Raised in: Rabbit.

Formulation

Liquid. 0.03% Proclin 300, 50% Glycerol, 0.01M PBS, PH 7.4.

Specificity

Human

Isotype

IgG

Uniprot ID

Q92604

Purification

>95%, Protein G purified

Immunogen

Recombinant Human Acyl-CoA:lysophosphatidylglycerol acyltransferase 1 protein (151-341AA)

Storage

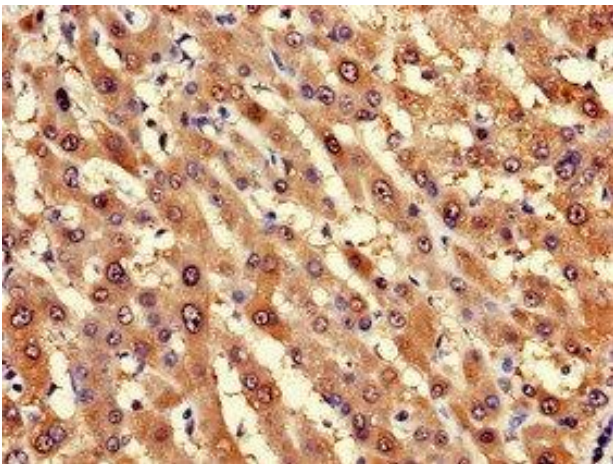
Shipped at 4°C. Upon delivery aliquot and store at -20°C (short-term) or -80°C (long-term). Avoid repeated freeze.

Alternative Names

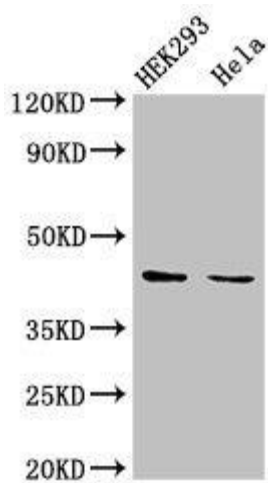
Acyl-CoA:lysophosphatidylglycerol acyltransferase 1, LPGAT1, FAM34A, KIAA0205

Application

ELISA, WB, IHC; Recommended dilution: WB:1:200-1:3000, IHC:1:20-1:200



Immunohistochemistry of paraffin-embedded human liver cancer using LPGAT1 Polyclonal Antibody at dilution of 1:100



Western Blot

Positive WB detected in: HEK293 whole cell lysate, HeLa whole cell lysate

All lanes: LPGAT1 Polyclonal Antibody at 3ug/ml
Secondary

Goat polyclonal to rabbit IgG at 1/50000 dilution

Predicted band size: 44 KDa

Observed band size: 44 KDa