

Actin Polyclonal Antibody

(Cat. No. A-0451)

Background

Actin is found in essentially all eukaryotic cells. It is one of the main proteins of the cytoskeleton. It regulates contractile potential in muscle tissues and helps to control the shape, as well as the motility, of other cells. Actin is an effective loading control used in Western blotting experiments. In higher eukaryotes, there are six isoforms of actin: Three alpha-actins (α -skeletal, α -cardiac, α -smooth muscle), one β -actin (β -non-muscle) and two γ -actins (γ -smooth muscle and γ -non-muscle).

Description

Rabbit polyclonal antibody to Actin

Formulation

Liquid. In PBS, pH 7.2, containing 0.09% sodium azide and 50% glycerol.

Immunogen

Bovine skeletal muscle Actin.

Specificity

Human, Mouse, Rat, Bovine, Dog, Chicken, Guinea pig, Hamster, Monkey, Pig, Rabbit, Sheep, Xenopus

Purification

Protein A-affinity purified.

Storage

Store at -20°C. Avoid multiple freeze/thaw cycles.

Application

WB (1:1000, ECL)

Ordering Information

Products

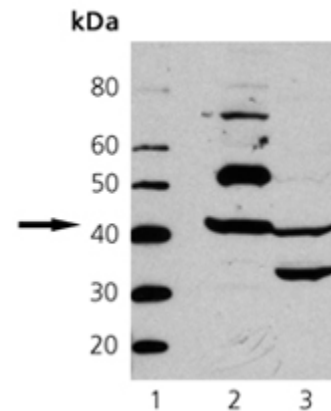
Actin Polyclonal Antibody

Size

200 μ g

Cat. No.

A-0451-200



▲ **Fig. 1.** Western Blot Analysis of Actin: Lane 1: MWM, Lane 2: Mouse Heart Tissue Extract, Lane 3: Chicken Heart Tissue Extract.

This product is for research purposes only. Not intended for use in diagnostic procedures.