

CRSP6 Monoclonal Antibody [4D4]

[Catalog No. A-6141-100]

Description

Mouse monoclonal antibody raised against a partial recombinant CRSP6, clone 4D4.

Size

100 µg

Purification

Protein A purified

Immunogen

CRSP6 (AAH21101, 551 a.a. ~ 652 a.a) partial recombinant protein with GST tag. MW of the GST tag alone is 26 KDa.

Cross Reactivity

Human

Isotype

IgG1 Kappa

Formulation

In 1x PBS, pH 7.2

Storage

Aliquot and store at -20°C or lower. Avoid repeated freezing and thawing. Multiple freeze/thaw cycles may result in decreased performance. Non-hazardous. No MSDS necessary.

Handling Recommendations

For maximum recovery of the products, centrifuge the vial prior to opening the cap.

Applications & Suggested Dilutions*

Western Blot: 0.5-1 µg/ml

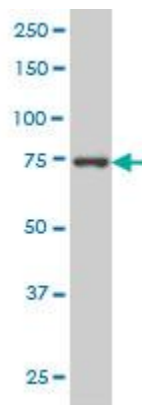
ELISA: 0.25-1 µg/ml

Immunohistochemistry (IHC): 2.5 µg/ml

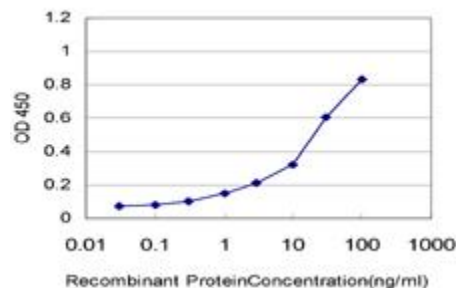
Immunofluorescence: 5 µg/ml

**The end user is responsible for determining optimal working dilutions.*

Data



CRSP6 Monoclonal Antibody, clone 4D4. Western Blot analysis of CRSP6 expression in HeLa NE.



Detection limit for recombinant GST tagged CRSP6 is approximately 0.3 ng/ml as a capture antibody.

This product is for research purposes only. Not intended for use in diagnostic procedures.