

RHEBL1 Monoclonal Antibody [4G6]

[Catalog No. A-6142-100]

Description

Mouse monoclonal antibody raised against a partial recombinant RHEBL1, clone 4G6.

Size

100 µg

Purification

Protein A purified

Immunogen

RHEBL1 (AAH27482, 87 a.a. ~ 183 a.a) partial recombinant protein with GST tag. MW of the GST tag alone is 26 KDa.

Cross Reactivity

Human

Isotype

IgG2a Kappa

Formulation

In 1x PBS, pH 7.2

Storage

Aliquot and store at -20°C or lower. Avoid repeated freezing and thawing. Multiple freeze/thaw cycles may result in decreased performance. Non-hazardous. No MSDS necessary.

Handling Recommendations

For maximum recovery of the products, centrifuge the vial prior to opening the cap.

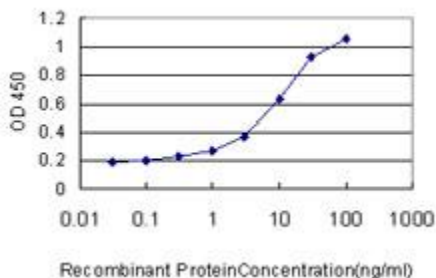
Applications & Suggested Dilutions*

Western Blot: 0.5-1 µg/ml

ELISA: 0.25-1 µg/ml

**The end user is responsible for determining optimal working dilutions.*

Data



Detection limit for recombinant GST tagged RHEBL1 is approximately 0.1 ng/ml as a capture antibody.

This product is for research purposes only. Not intended for use in diagnostic procedures.