

RPS6KB1 Monoclonal Antibody [1E12]

[Catalog No. A-6149-100]

Description

Mouse monoclonal antibody raised against a partial recombinant RPS6KB1, clone 1E12.

Size

100 µg

Purification

Protein A purified

Immunogen

RPS6KB1 (NP_003152, 416 a.a. ~ 526 a.a) partial recombinant protein with GST tag. MW of the GST tag alone is 26 KDa.

Cross Reactivity

Human

Isotype

IgG2b Kappa

Formulation

In 1x PBS, pH 7.2

Storage

Aliquot and store at -20°C or lower. Avoid repeated freezing and thawing. Multiple freeze/thaw cycles may result in decreased performance. Non-hazardous. No MSDS necessary.

Handling Recommendations

For maximum recovery of the products, centrifuge the vial prior to opening the cap.

Applications & Suggested Dilutions*

Western Blot: 0.5-1 µg/ml

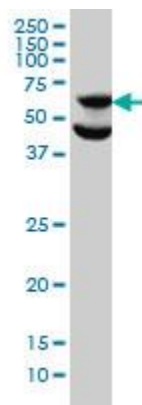
ELISA: 0.25-1 µg/ml

Immunohistochemistry (IHC): 2.5 µg/ml

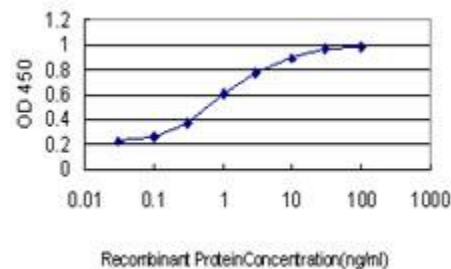
Immunofluorescence: 5 µg/ml

**The end user is responsible for determining optimal working dilutions.*

Data



RPS6KB1 Monoclonal Antibody, clone 1E12. Western Blot analysis of RPS6KB1 expression in HeLa.



Detection limit for recombinant GST tagged RPS6KB1 is approximately 0.03 ng/ml as a capture antibody.

This product is for research purposes only. Not intended for use in diagnostic procedures.