

## MLH1 Monoclonal Antibody [M1]

[Catalog No. A-6175-100]

### Description

Mouse monoclonal antibody raised against a full length recombinant MLH1, clone M1.

### Size

100 µg

### Purification

Protein A purified

### Immunogen

MLH1 (AAH06850, 1 a.a. ~ 757 a.a) full length recombinant protein with GST tag. MW of the GST tag alone is 26 KDa.

### Cross Reactivity

Human

### Isotype

IgG

### Formulation

In 1x PBS, pH 7.2

### Storage

Aliquot and store at -20°C or lower. Avoid repeated freezing and thawing. Multiple freeze/thaw cycles may result in decreased performance. Non-hazardous. No MSDS necessary.

### Handling Recommendations

For maximum recovery of the products, centrifuge the vial prior to opening the cap.

### Applications & Suggested Dilutions\*

Western Blot: 0.5-1 µg/ml

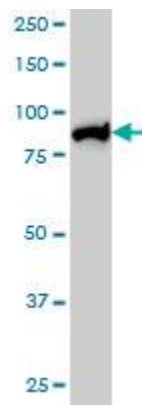
ELISA: 0.25-1 µg/ml

Immunohistochemistry (IHC): 2.5 µg/ml

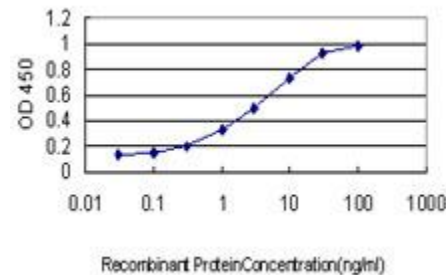
Immunofluorescence: 5 µg/ml

*\*The end user is responsible for determining optimal working dilutions.*

### Data



MLH1 Monoclonal Antibody, clone M1. Western Blot analysis of MLH1 expression in HeLa NE.



Detection limit for recombinant GST tagged MLH1 is approximately 0.03 ng/ml as a capture antibody.

*This product is for research purposes only. Not intended for use in diagnostic procedures.*