

MSH6 Monoclonal Antibody [1F2]

[Catalog No. ABB-6106-100]

Description

Mouse monoclonal antibody raised against a partial recombinant MSH6, clone 1F2.

Size

100 µg

Purification

Protein A purified

Immunogen

MSH6 (NP_000170, 931 a.a. ~ 1031 a.a) partial recombinant protein with GST tag. MW of the GST tag alone is 26 KDa.

Cross Reactivity

Human

Isotype

IgG1 Kappa

Formulation

In 1x PBS, pH 7.2

Storage

Aliquot and store at -20°C or lower. Avoid repeated freezing and thawing. Multiple freeze/thaw cycles may result in decreased performance. Non-hazardous. No MSDS necessary.

Handling Recommendations

For maximum recovery of the products, centrifuge the vial prior to opening the cap.

Applications & Suggested Dilutions*

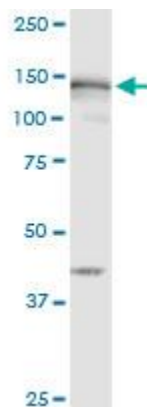
Western Blot: 0.5-1 µg/ml

ELISA: 0.25-1 µg/ml

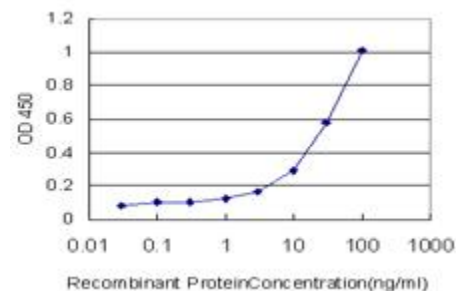
Immunofluorescence: 5 µg/ml

**The end user is responsible for determining optimal working dilutions.*

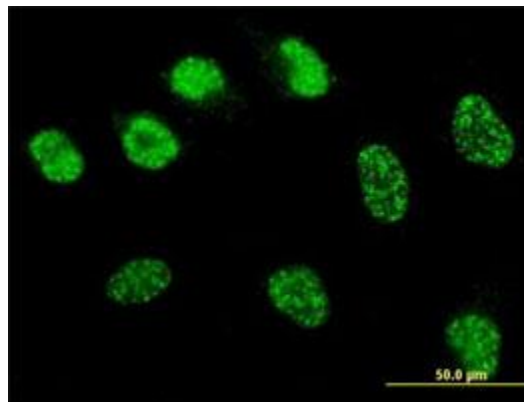
Data



MSH6 Monoclonal Antibody, clone 1F2. Western Blot analysis of MSH6 expression in human kidney.



Detection limit for recombinant GST tagged MSH6 is approximately 1 ng/ml as a capture antibody.



Immunofluorescence of monoclonal antibody to MSH6 on HeLa cell. [Antibody Concentration: 10 µg/ml]

This product is for research purposes only. Not intended for use in diagnostic procedures.