

SMC1L1 Monoclonal Antibody [1B9]

[Catalog No. A-6189-100]

Description

Mouse monoclonal antibody raised against a partial recombinant SMC1L1, clone 1B9.

Size

100 µg

Purification

Protein A purified

Immunogen

SMC1L1 (NP_006297, 366 a.a. ~ 466 a.a) partial recombinant protein with GST tag. MW of the GST tag alone is 26 KDa.

Cross Reactivity

Human

Isotype

IgG1 Kappa

Formulation

In 1x PBS, pH 7.2

Storage

Aliquot and store at -20°C or lower. Avoid repeated freezing and thawing. Multiple freeze/thaw cycles may result in decreased performance. Non-hazardous. No MSDS necessary.

Handling Recommendations

For maximum recovery of the products, centrifuge the vial prior to opening the cap.

Applications & Suggested Dilutions*

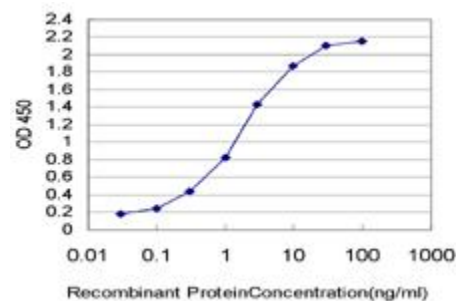
Western Blot: 0.5-1 µg/ml

ELISA: 0.25-1 µg/ml

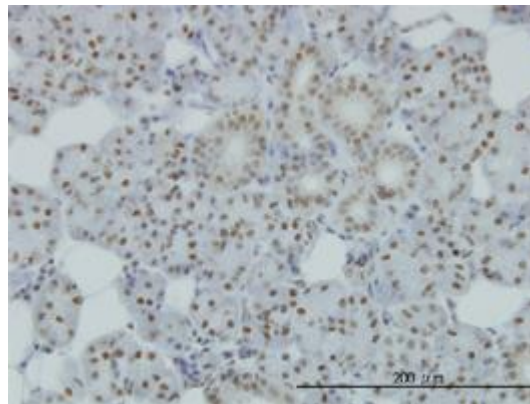
Immunohistochemistry (IHC): 2.5 µg/ml

**The end user is responsible for determining optimal working dilutions.*

Data



Detection limit for recombinant GST tagged SMC1L1 is approximately 0.03 ng/ml as a capture antibody.



Immunoperoxidase of monoclonal antibody to SMC1L1 on formalin-fixed paraffin-embedded human salivary gland. [Antibody Concentration: 1 µg/ml]

This product is for research purposes only. Not intended for use in diagnostic procedures.