

NME1 Monoclonal Antibody [1D7]

[Catalog No. A-6196-100]

Description

Mouse monoclonal antibody raised against a partial recombinant NME1, clone 1D7.

Size

100 µg

Purification

Protein A purified

Immunogen

NME1 (NP_000260, 43 a.a. ~ 153 a.a) partial recombinant protein with GST tag. MW of the GST tag alone is 26 KDa.

Cross Reactivity

Human

Isotype

IgG1 Kappa

Formulation

In 1x PBS, pH 7.2

Storage

Aliquot and store at -20°C or lower. Avoid repeated freezing and thawing. Multiple freeze/thaw cycles may result in decreased performance. Non-hazardous. No MSDS necessary.

Handling Recommendations

For maximum recovery of the products, centrifuge the vial prior to opening the cap.

Applications & Suggested Dilutions*

Western Blot: 0.5-1 µg/ml

Immunoprecipitation: 5 µg/ml

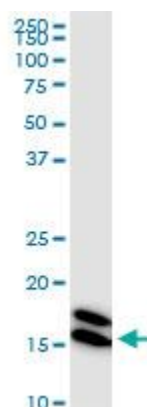
ELISA: 0.25-1 µg/ml

Immunohistochemistry (IHC): 2.5 µg/ml

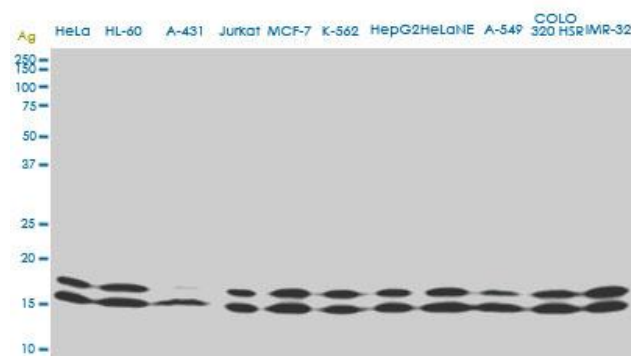
Immunofluorescence: 5 µg/ml

*The end user is responsible for determining optimal working dilutions.

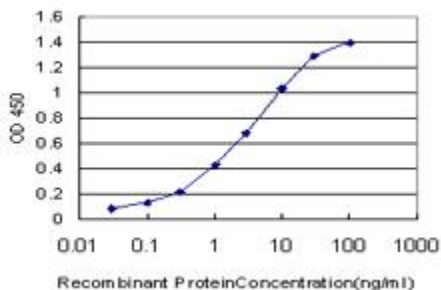
Data



NME1 Monoclonal Antibody, clone 1D7. Western Blot analysis of NME1 expression in HeLa.



NME1 monoclonal antibody, clone 1D7. Western Blot analysis of NME1 expression in different cell lines.



Detection limit for recombinant GST tagged NME1 is approximately 0.1 ng/ml as a capture antibody.

This product is for research purposes only. Not intended for use in diagnostic procedures.