

## TRAF6 Monoclonal Antibody [1B2]

[Catalog No. A-6210-100]

### Description

Mouse monoclonal antibody raised against a partial recombinant TRAF6, clone 1B2.

### Size

100 µg

### Purification

Protein A purified

### Immunogen

TRAF6 (AAH31052, 413 a.a. ~ 523 a.a) partial recombinant protein with GST tag. MW of the GST tag alone is 26 KDa.

### Cross Reactivity

Human

### Isotype

IgG2b Kappa

### Formulation

In 1x PBS, pH 7.2

### Storage

Aliquot and store at -20°C or lower. Avoid repeated freezing and thawing. Multiple freeze/thaw cycles may result in decreased performance. Non-hazardous. No MSDS necessary.

### Handling Recommendations

For maximum recovery of the products, centrifuge the vial prior to opening the cap.

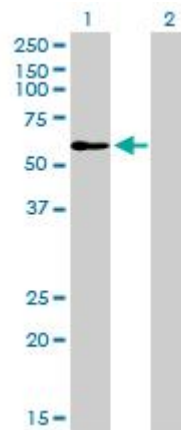
### Applications & Suggested Dilutions\*

Western Blot: 0.5-1 µg/ml

ELISA: 0.25-1 µg/ml

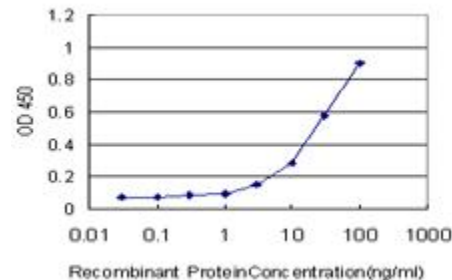
*\*The end user is responsible for determining optimal working dilutions.*

### Data



Western Blot analysis of TRAF6 expression in transfected 293T cell line by TRAF6 Monoclonal Antibody, clone 1B2.

Lane 1: TRAF6 transfected lysate (59.6 KDa).  
Lane 2: Non-transfected lysate.



Detection limit for recombinant GST tagged TRAF6 is approximately 1 ng/ml as a capture antibody.

*This product is for research purposes only. Not intended for use in diagnostic procedures.*