

## BCL2L1 Monoclonal Antibody [3E2-2A5]

[Catalog No. A-6214-100]

### Description

Mouse monoclonal antibody raised against a full length recombinant BCL2L1, clone 3E2-2A5.

### Size

100 µg

### Purification

Protein A purified

### Immunogen

BCL2L1 (AAH19307, 1 a.a. ~ 234 a.a) full length recombinant protein with GST tag. MW of the GST tag alone is 26 KDa.

### Cross Reactivity

Human

### Isotype

IgG1 Kappa

### Formulation

In 1x PBS, pH 7.2

### Storage

Aliquot and store at -20°C or lower. Avoid repeated freezing and thawing. Multiple freeze/thaw cycles may result in decreased performance. Non-hazardous. No MSDS necessary.

### Handling Recommendations

For maximum recovery of the products, centrifuge the vial prior to opening the cap.

### Applications & Suggested Dilutions\*

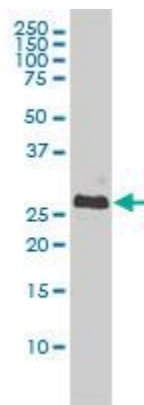
Western Blot: 0.5-1 µg/ml

ELISA: 0.25-1 µg/ml

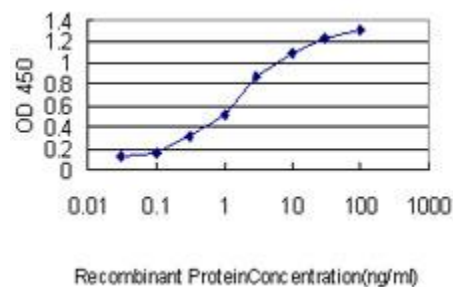
Immunofluorescence: 5 µg/ml

*\*The end user is responsible for determining optimal working dilutions.*

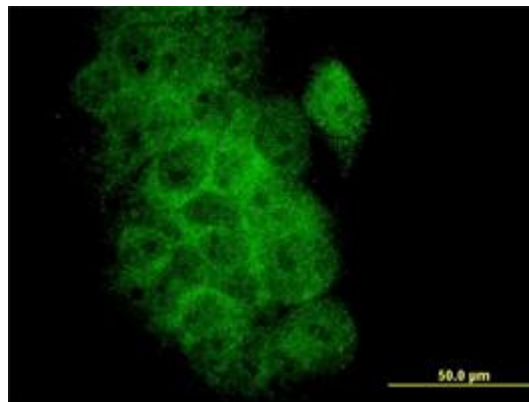
### Data



BCL2L1 Monoclonal Antibody, clone 3E2-2A5. Western Blot analysis of BCL2L1 expression in A-431.



Detection limit for recombinant GST tagged BCL2L1 is approximately 0.03 ng/ml as a capture antibody.



Immunofluorescence of monoclonal antibody to BCL2L1 on A-431 cell. [Antibody Concentration: 10 µg/ml]

*This product is for research purposes only. Not intended for use in diagnostic procedures.*