

MAP2K6 Monoclonal Antibody [2F2]

[Catalog No. A-7157-100]

Description

Mouse monoclonal antibody raised against a partial recombinant MAP2K6, clone 2F2.

Size

100 µg

Purification

Protein A purified

Immunogen

MAP2K6 (AAH12009, 231 a.a. ~ 335 a.a) partial recombinant protein with GST tag. MW of the GST tag alone is 26 KDa.

Cross Reactivity

Human

Isotype

IgG2a Kappa

Formulation

In 1x PBS, pH 7.2

Storage

Aliquot and store at -20°C or lower. Avoid repeated freezing and thawing. Multiple freeze/thaw cycles may result in decreased performance. Non-hazardous. No MSDS necessary.

Handling Recommendations

For maximum recovery of the products, centrifuge the vial prior to opening the cap.

Applications & Suggested Dilutions*

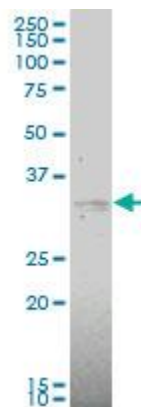
Western Blot: 0.5-1 µg/ml

ELISA: 0.25-1 µg/ml

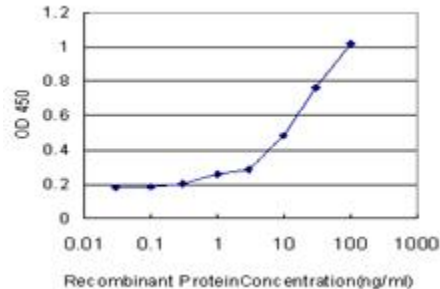
Immunofluorescence: 5 µg/ml

**The end user is responsible for determining optimal working dilutions.*

Data



MAP2K6 Monoclonal Antibody, clone 2F2. Western Blot analysis of MAP2K6 expression in COLO 320 HSR.



Detection limit for recombinant GST tagged MAP2K6 is approximately 0.3 ng/ml as a capture antibody.

This product is for research purposes only. Not intended for use in diagnostic procedures.