

## CDC25C Monoclonal Antibody [3B11]

[Catalog No. A-7172-100]

### Description

Mouse monoclonal antibody raised against a partial recombinant CDC25C, clone 3B11.

### Size

100 µg

### Purification

Protein A purified

### Immunogen

CDC25C (AAH19089, 21 a.a. ~ 130 a.a) partial recombinant protein with GST tag. MW of the GST tag alone is 26 KDa.

### Cross Reactivity

Human

### Isotype

IgG1 Kappa

### Formulation

In 1x PBS, pH 7.2

### Storage

Aliquot and store at -20°C or lower. Avoid repeated freezing and thawing. Multiple freeze/thaw cycles may result in decreased performance. Non-hazardous. No MSDS necessary.

### Handling Recommendations

For maximum recovery of the products, centrifuge the vial prior to opening the cap.

### Applications & Suggested Dilutions\*

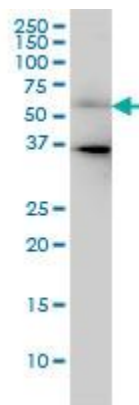
Western Blot: 0.5-1 µg/ml

ELISA: 0.25-1 µg/ml

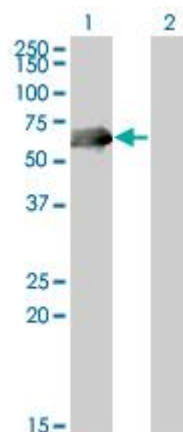
Immunohistochemistry (IHC): 2.5 µg/ml

\*The end user is responsible for determining optimal working dilutions.

### Data



CDC25C Monoclonal Antibody, clone 3B11. Western Blot analysis of CDC25C expression in HeLa.



Western Blot analysis of CDC25C expression in transfected 293T cell line by CDC25C Monoclonal Antibody, clone 3B11.

Lane 1: CDC25C transfected lysate (53.312 KDa).  
Lane 2: Non-transfected lysate.

This product is for research purposes only. Not intended for use in diagnostic procedures.