

## IBRDC1 Monoclonal Antibody [4B1]

[Catalog No. A-8105-100]

### Description

Mouse monoclonal antibody raised against a partial recombinant IBRDC1, clone 4B1.

### Size

100 µg

### Purification

Protein A purified

### Immunogen

IBRDC1 (NP\_689766, 2 a.a. ~ 101 a.a) partial recombinant protein with GST tag. MW of the GST tag alone is 26 KDa.

### Cross Reactivity

Human

### Isotype

IgG2a Kappa

### Formulation

In 1x PBS, pH 7.2

### Storage

Aliquot and store at -20°C or lower. Avoid repeated freezing and thawing. Multiple freeze/thaw cycles may result in decreased performance. Non-hazardous. No MSDS necessary.

### Handling Recommendations

For maximum recovery of the products, centrifuge the vial prior to opening the cap.

### Applications & Suggested Dilutions\*

Western Blot: 0.5-1 µg/ml

ELISA: 0.25-1 µg/ml

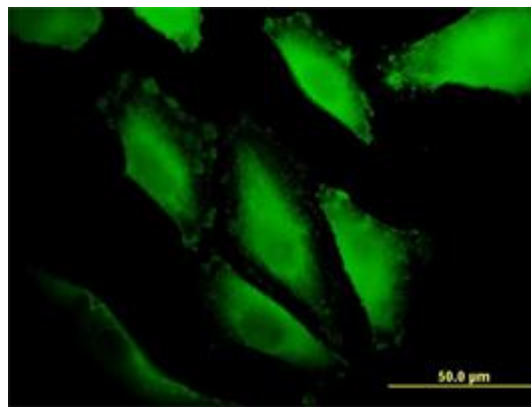
Immunofluorescence: 5 µg/ml

*\*The end user is responsible for determining optimal working dilutions.*

### Data



*IBRDC1 Monoclonal Antibody, clone 4B1. Western Blot analysis of IBRDC1 expression in HepG2.*



*Immunofluorescence of monoclonal antibody to IBRDC1 on HepG2 cell. [Antibody Concentration: 10 µg/ml]*

*This product is for research purposes only. Not intended for use in diagnostic procedures.*