

UBE2C Monoclonal Antibody [9D3]

[Catalog No. A-8111-100]

Description

Mouse monoclonal antibody raised against a partial recombinant UBE2C, clone 9D3.

Size

100 µg

Purification

Protein A purified

Immunogen

UBE2C (NP_008950, 70 a.a. ~ 180 a.a) partial recombinant protein with GST tag. MW of the GST tag alone is 26 KDa.

Cross Reactivity

Human

Isotype

IgG2a Kappa

Formulation

In 1x PBS, pH 7.2

Storage

Aliquot and store at -20°C or lower. Avoid repeated freezing and thawing. Multiple freeze/thaw cycles may result in decreased performance. Non-hazardous. No MSDS necessary.

Handling Recommendations

For maximum recovery of the products, centrifuge the vial prior to opening the cap.

Applications & Suggested Dilutions*

Western Blot: 0.5-1 µg/ml

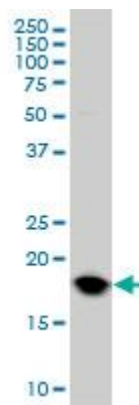
ELISA: 0.25-1 µg/ml

Immunohistochemistry (IHC): 2.5 µg/ml

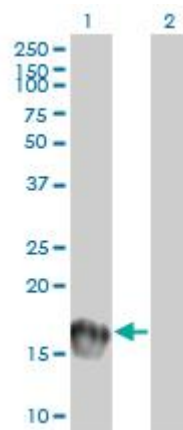
Immunofluorescence: 5 µg/ml

*The end user is responsible for determining optimal working dilutions.

Data



UBE2C Monoclonal Antibody, clone 9D3. Western Blot analysis of UBE2C expression in HeLa.



Western Blot analysis of UBE2C expression in transfected 293T cell line by UBE2C Monoclonal Antibody, clone 9D3.

Lane 1: UBE2C transfected lysate (19.7 KDa).
Lane 2: Non-transfected lysate.

This product is for research purposes only. Not intended for use in diagnostic procedures.