

## ADPRH Monoclonal Antibody [1F11]

[Catalog No. A-8141-100]

### Description

Mouse monoclonal antibody raised against a partial recombinant ADPRH, clone 1F11.

### Size

100 µg

### Purification

Protein A purified

### Immunogen

ADPRH (NP\_001116, 23 a.a. ~ 122 a.a) partial recombinant protein with GST tag. MW of the GST tag alone is 26 KDa.

### Cross Reactivity

Human

### Isotype

IgG2a Kappa

### Formulation

In 1x PBS, pH 7.2

### Storage

Aliquot and store at -20°C or lower. Avoid repeated freezing and thawing. Multiple freeze/thaw cycles may result in decreased performance. Non-hazardous. No MSDS necessary.

### Handling Recommendations

For maximum recovery of the products, centrifuge the vial prior to opening the cap.

### Applications & Suggested Dilutions\*

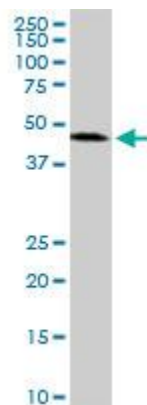
Western Blot: 0.5-1 µg/ml

ELISA: 0.25-1 µg/ml

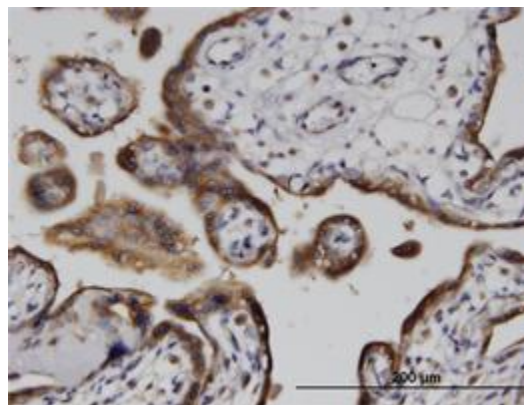
Immunohistochemistry (IHC): 5 µg/ml

*\*The end user is responsible for determining optimal working dilutions.*

### Data



ADPRH Monoclonal Antibody, clone 1F11. Western Blot analysis of ADPRH expression in K-562.



Immunoperoxidase of monoclonal antibody to ADPRH on formalin-fixed paraffin-embedded human placenta. [Antibody Concentration: 3 µg/ml]

*This product is for research purposes only. Not intended for use in diagnostic procedures.*