
HNRNPL Polyclonal Antibody

(Catalog # A70503)

Background

Heterogeneous nuclear RNAs (hnRNAs) which include mRNA precursors and mature mRNAs are associated with specific proteins to form heterogeneous ribonucleoprotein (hnRNP) complexes. Heterogeneous nuclear ribonucleoprotein L is among the proteins that are stably associated with hnRNP complexes and along with other hnRNP proteins is likely to play a major role in the formation, packaging, processing, and function of mRNA. Heterogeneous nuclear ribonucleoprotein L is present in the nucleoplasm as part of the HNRNP complex. HNRNP proteins have also been identified outside of the nucleoplasm. Exchange of hnRNP for mRNA-binding proteins accompanies transport of mRNA from the nucleus to the cytoplasm. Since HNRNP proteins have been shown to shuttle between the nucleus and the cytoplasm, it is possible that they also have cytoplasmic functions. Two transcript variants encoding different isoforms have been found for this gene.

Description

HNRNPL Polyclonal Antibody. Unconjugated. Raised in: Rabbit.

Formulation

Buffer: PBS with 0.02% sodium azide, 50% glycerol, pH7.3.

Specificity

Human, Mouse, Rat

Isotype

IgG

Uniprot ID

P14866

Purification

Affinity Purification

Immunogen

Recombinant fusion protein containing a sequence corresponding to amino acids 282-589 of human HNRNPL (NP_001524.2).

Storage

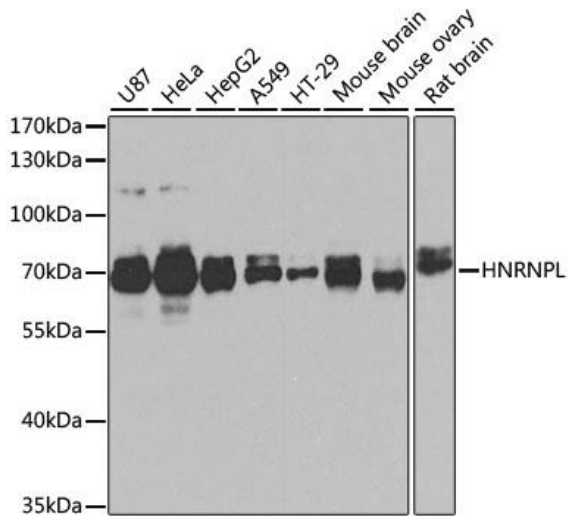
Shipped at 4°C. Upon receipt, store at -20°C. Avoid freeze / thaw cycles

Alternative Names

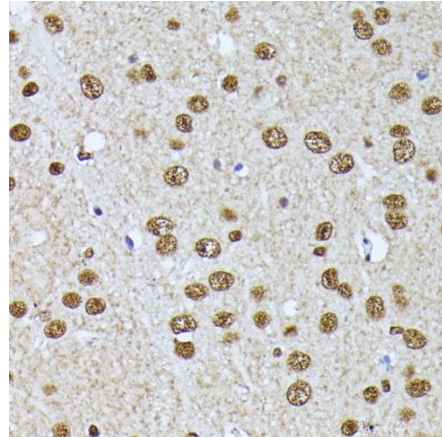
HNRNPL; HNRPL; P/OKcl.14; hnRNP-L; heterogeneous nuclear ribonucleoprotein L

Application

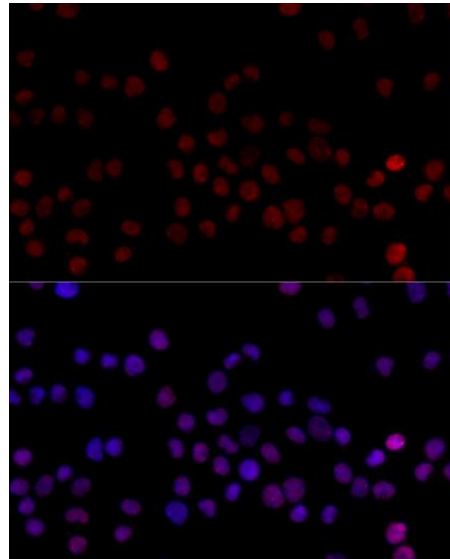
WB, IHC, IF; Recommended dilution: WB 1:500 - 1:2000, IHC 1:50 - 1:200, IF 1:50 - 1:200



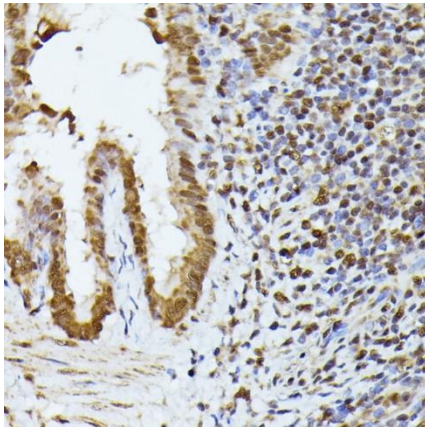
Western blot analysis of extracts of various cell lines, using HNRNPL Polyclonal Antibody at 1:1000 dilution.
 Secondary Antibody: HRP Goat Anti-Rabbit IgG (H+L) at 1:10000 dilution.
 Lysates/proteins: 25ug per lane.
 Blocking buffer: 3% nonfat dry milk in TBST. Exposure time: 90s.



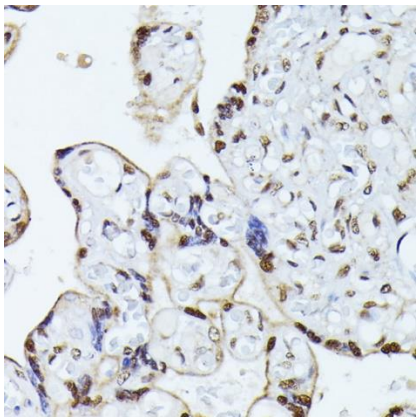
Immunohistochemistry of paraffin-embedded mouse brain using HNRNPL Polyclonal Antibody at dilution of 1:100 (40x lens).



Immunofluorescence analysis of 293T cells using HNRNPL Polyclonal Antibody at dilution of 1:100 (40x lens). Blue: DAPI for nuclear staining.



Immunohistochemistry of paraffin-embedded rat lung using HNRNPL Polyclonal Antibody at dilution of 1:100 (40x lens).



Immunohistochemistry of paraffin-embedded human placenta using HNRNPL Polyclonal Antibody at dilution of 1:100 (40x lens).