

---

## Phospho-RAF1-S259 Polyclonal Antibody

(Catalog #A71821)

---

### Background

This gene is the cellular homolog of viral raf gene (v-raf). The encoded protein is a MAP kinase kinase kinase (MAP3K), which functions downstream of the Ras family of membrane associated GTPases to which it binds directly. Once activated, the cellular RAF1 protein can phosphorylate to activate the dual specificity protein kinases MEK1 and MEK2, which in turn phosphorylate to activate the serine/threonine specific protein kinases, ERK1 and ERK2. Activated ERKs are pleiotropic effectors of cell physiology and play an important role in the control of gene expression involved in the cell division cycle, apoptosis, cell differentiation and cell migration. Mutations in this gene are associated with Noonan syndrome 5 and LEOPARD syndrome 2.

### Description

Phospho-RAF1-S259 Polyclonal Antibody. Unconjugated. Raised in: Rabbit.

### Formulation

Buffer: PBS with 0.02% sodium azide, 50% glycerol, pH7.3.

### Specificity

Human

### Isotype

IgG

### Uniprot ID

P04049

### Purification

Affinity Purification

### Immunogen

A synthetic phosphorylated peptide around S259 of human Phospho-Raf1-S259 (NP\_002871.1).

### Storage

Shipped at 4°C. Upon receipt, store at -20°C. Avoid freeze / thaw cycles

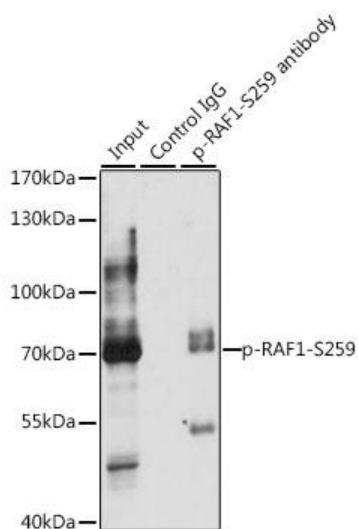
### Alternative Names

RAF1; CMD1NN; CRAF; NS5; Raf-1; c-Raf; Raf-1 proto-oncogene, serine/threonine kinase

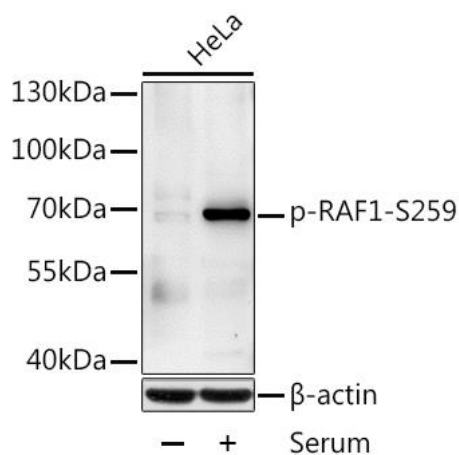
### Application

WB, IP; Recommended dilution: WB 1:500 - 1:2000, IP 1:50 - 1:100

---



Immunoprecipitation analysis of 200ug extracts of HeLa cells, using 3 ug Phospho-RAF1-S259 Polyclonal Antibody. Western blot was performed from the immunoprecipitate using Phospho-RAF1-S259 Polyclonal Antibody at a dilution of 1:1000. HeLa cells were treated by 10% FBS at 37°C for 30 minutes after serum-starvation overnight.



Western blot analysis of extracts of HeLa cells, using Phospho-RAF1-S259 antibody at 1:1000 dilution. HeLa cells were treated by 10% FBS after serum-starvation overnight. Secondary antibody: HRP Goat Anti-Rabbit IgG (H+L) at 1:10000 dilution. Lysates/proteins: 25ug per lane. Blocking buffer: 3% BSA.