

## **SELENOM Polyclonal Antibody**

(Catalog # A72758)

---

### **Background**

The protein encoded by this gene belongs to the selenoprotein M/SEP15 family. The exact function of this protein is not known. It is localized in the perinuclear region, is highly expressed in the brain, and may be involved in neurodegenerative disorders. Transgenic mice with targeted deletion of this gene exhibit increased weight gain, suggesting a role for this gene in the regulation of body weight and energy metabolism. This protein is a selenoprotein, containing the rare amino acid selenocysteine (Sec). Sec is encoded by the UGA codon, which normally signals translation termination. The 3' UTRs of selenoprotein mRNAs contain a conserved stem-loop structure, designated the Sec insertion sequence (SECIS) element, that is necessary for the recognition of UGA as a Sec codon, rather than as a stop signal.

### **Description**

SELENOM Polyclonal Antibody. Unconjugated. Raised in: Rabbit.

### **Formulation**

Buffer: PBS with 0.02% sodium azide, 50% glycerol, pH7.3.

### **Specificity**

Human, Mouse

### **Isotype**

IgG

### **Uniprot ID**

Q8WWX9

### **Purification**

Affinity Purification

### **Immunogen**

Recombinant fusion protein containing a sequence corresponding to amino acids 50-130 of human SELENOM (NP\_536355.1).

### **Storage**

Shipped at 4°C. Upon receipt, store at -20°C. Avoid freeze / thaw cycles

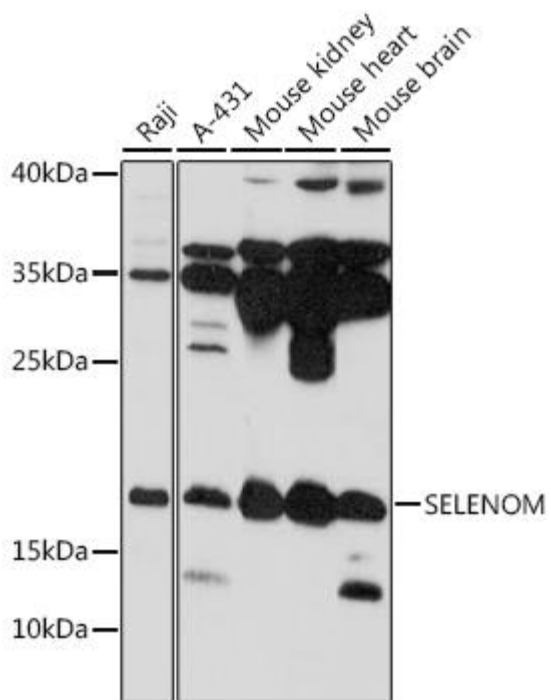
### **Alternative Names**

SELENOM; SELM; SEPM; selenoprotein M

### **Application**

WB; Recommended dilution: WB: 1:500-1:2000

---



Western blot analysis of extracts of various cell lines, using SELENOM Polyclonal Antibody at 1:1000 dilution.  
Secondary antibody: HRP Goat Anti-Rabbit IgG (H+L) at 1:10000 dilution.  
Lysates/proteins: 25ug per lane.  
Blocking buffer: 3% nonfat dry milk in TBST.  
Exposure time: 10s.