
UBE2C Polyclonal Antibody

(Catalog # A50576)

Background

Accepts ubiquitin from the E1 complex and catalyzes its covalent attachment to other proteins. In vitro catalyzes 'Lys-11'- and 'Lys-48'-linked polyubiquitination. Acts as an essential factor of the anaphase promoting complex/cyclosome (APC/C), a cell cycle-regulated ubiquitin ligase that controls progression through mitosis. Acts by initiating 'Lys-11'-linked polyubiquitin chains on APC/C substrates, leading to the degradation of APC/C substrates by the proteasome and promoting mitotic exit.

Description

UBE2C Polyclonal Antibody. Unconjugated. Raised in: Rabbit.

Formulation

0.03% Proclin 300, 50% Glycerol, 0.01M PBS, PH 7.4

Specificity

Human

Isotype

IgG

Uniprot ID

O00762

Purification

Protein G purified

Immunogen

Recombinant Human Ubiquitin-conjugating enzyme E2 C protein (2-179AA)

Storage

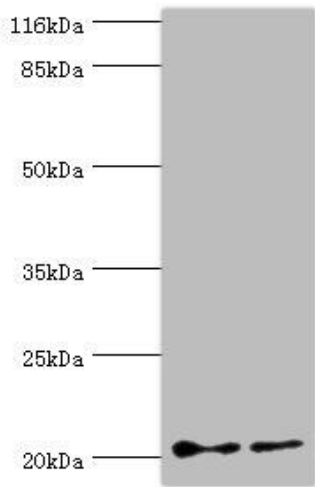
Shipped at 4°C. Upon delivery aliquot and store at -20°C (short-term) or -80°C (long-term). Avoid repeated freeze.

Alternative Names

Ubiquitin-conjugating enzyme E2 C, (E3-independent) E2 ubiquitin-conjugating enzyme C, E2 ubiquitin-conjugating enzyme C, UbcH10, Ubiquitin carrier protein C, Ubiquitin-protein ligase C, UBE2C, UBCH10

Application

ELISA, WB, IHC; Recommended dilution: WB:1:500-1:5000, IHC:1:20-1:200



Western blot

All lanes: UBE2C Polyclonal Antibody at 2ug/ml

Lane 1: Hela whole cell lysate

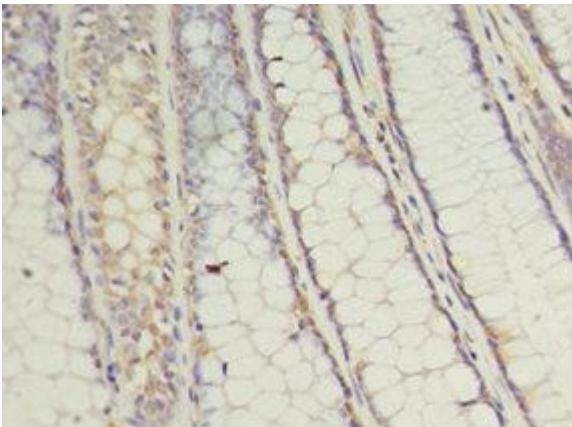
Lane 2: U87 whole cell lysate

Secondary

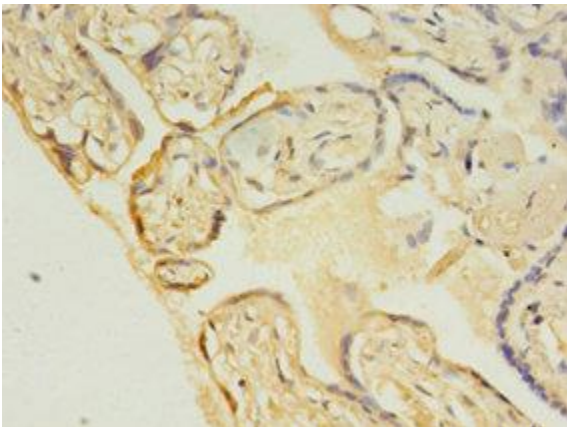
Goat polyclonal to rabbit at 1/10000 dilution

Predicted band size: 20, 16, 17, 18 kDa

Observed band size: 20 kDa



Immunohistochemistry of paraffin-embedded human colon cancer tissue at dilution 1:100



Immunohistochemistry of paraffin-embedded human placenta at dilution 1:100