
RYR1 Polyclonal Antibody

(Catalog # A52748)

Background

Calcium channel that mediates the release of Ca²⁺ from the sarcoplasmic reticulum into the cytoplasm and thereby plays a key role in triggering muscle contraction following depolarization of T-tubules. Repeated very high-level exercise increases the open probability of the channel and leads to Ca²⁺ leaking into the cytoplasm. Can also mediate the release of Ca²⁺ from intracellular stores in neurons, and may thereby promote prolonged Ca²⁺ signaling in the brain. Required for normal embryonic development of muscle fibers and skeletal muscle. Required for normal heart morphogenesis, skin development and ossification during embryogenesis

Description

RYR1 Polyclonal Antibody. Unconjugated. Raised in: Rabbit.

Formulation

Liquid. 0.03% Proclin 300, 50% Glycerol, 0.01M PBS, PH 7.4.

Specificity

Human

Isotype

IgG

Uniprot ID

P21817

Purification

>95%, Protein G purified

Immunogen

Recombinant Human Ryanodine receptor 1 protein (1-534AA)

Storage

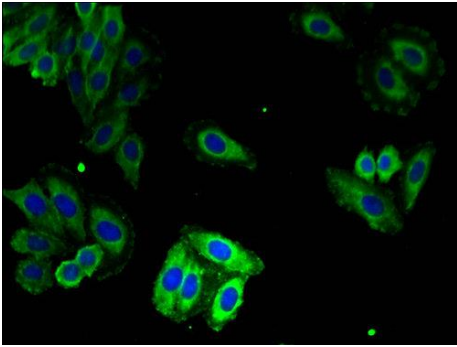
Shipped at 4°C. Upon delivery aliquot and store at -20°C (short-term) or -80°C (long-term). Avoid repeated freeze.

Alternative Names

Skeletal muscle calcium release channel, Skeletal muscle ryanodine receptor, Skeletal muscle-type ryanodine receptor, Type 1 ryanodine receptor, RYR1, RYDR

Application

ELISA, IF; Recommended dilution: IF:1:50-1:200



Immunofluorescent analysis of HepG2 cells at a dilution of 1:100 and Alexa Fluor 488-conjugated AffiniPure Goat Anti-Rabbit IgG(H+L)