

## ASB7 Polyclonal Antibody

(Catalog # A67274)

### Background

Probable substrate-recognition component of a SCF-like ECS (Elongin-Cullin-SOCS-box protein) E3 ubiquitin-protein ligase complex which mediates the ubiquitination and subsequent proteasomal degradation of target proteins.

### Description

ASB7 Polyclonal Antibody. Unconjugated. Raised in: Rabbit.

### Formulation

Liquid. 0.03% Proclin 300, 50% Glycerol, 0.01M PBS, PH 7.4.

### Specificity

Human

### Isotype

IgG

### Uniprot ID

Q9H672

### Purification

>95%, Protein G purified

### Immunogen

Recombinant Human Ankyrin repeat and SOCS box protein 7 protein (1-274AA)

### Storage

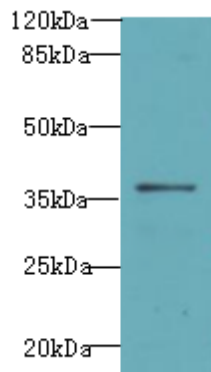
Shipped at 4°C. Upon delivery aliquot and store at -20°C (short-term) or -80°C (long-term). Avoid repeated freeze.

### Alternative Names

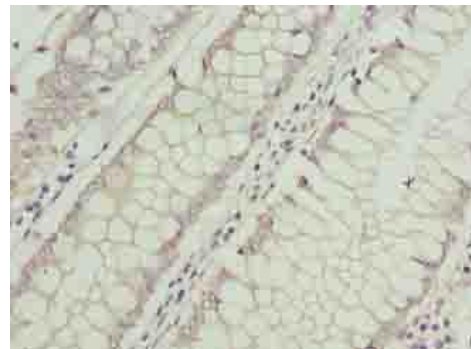
Ankyrin repeat and SOCS box protein 7, ASB-7, ASB7

### Application

ELISA, WB, IHC; Recommended dilution: WB:1:1000-1:5000, IHC:1:20-1:200



Western blot: All lanes: ASB7 Polyclonal Antibody at 8ug/ml+A431 whole cell lysate  
Goat polyclonal to rabbit at 1/10000 dilution  
Predicted band size: 36 kDa  
Observed band size: 36 kDa



Immunohistochemistry of paraffin-embedded human colon cancer using ASB7 Polyclonal Antibody at dilution of 1:100